

## Estimating ARXX Edge Wide Walls

The ARXX Estimating Program for ARXX Edge ICFs has been developed for typical applications of standard connectors sizes 4", 5", 6" 8" and 10" (100 mm, 125 mm, 150 mm, 200 mm and 250 mm). This bulletin provides conversion factors to allow the material quantities from the estimating program to be used for wider wall core thickness, if required.

Use the ARXX Edge Estimating program for the block quantities, and use the factors identified here to re-calculate the concrete volume, the number of connectors, and the number of ARXX Edge splice connectors required. In the estimating program do not indicate corners – indicate the number of joints (inside and outside turns) with panel connectors for all corners.

### Guidelines:

All ARXX Edge walls over 10" wide require 3 connectors per web.  
 All ARXX Edge corners over 10" wide are easily constructed using panel connectors, do not estimate with corner forms.

### 12" Wide Wall

1. Estimate as a 6" wall to get the total number of standard, straight blocks and the concrete volume.
2. Requires two 6" connectors for the 12" wide wall, plus one splice connector.
3. Requires 3 rows of connectors per web x 6 webs. Calculate connectors – total number of forms x 2 x 3 x 6.
4. Splice connectors – total forms x 18.
5. ARXX Edge tie anchors – 12 per corner.
6. Concrete volume – 6" volume x 2.

### 13" Wide Wall

1. Estimate as an 8" wall to get the total number of standard, straight blocks and the concrete volume.
2. Requires one 8" connector and one 5" connector for the 13" wide wall, plus one splice connector.
3. Requires 3 rows of connectors per web x 6 webs. Calculate connectors – total number of forms x 2 x 3 x 6.
4. Splice connectors – total forms x 18.
5. ARXX Edge tie anchors – 12 per corner.
6. Concrete volume – 8" volume x 1.625.

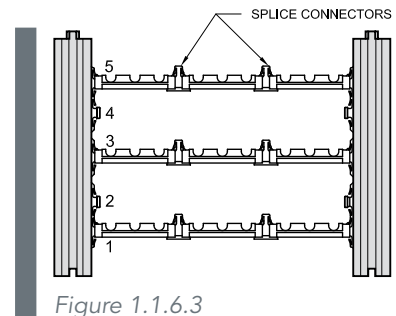


Figure 1.1.6.3

Redefining building.

1.800.293.3210

www.arxx.com

1 of 2

**14" Wide Wall**

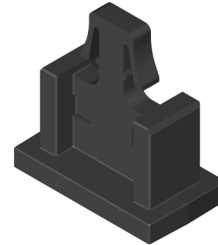
1. Estimate as an 8" wall to get the total number of standard, straight blocks and the concrete volume.
2. Requires one 8" and one 6" connector for the 14" wide wall, plus one splice connector.
3. Requires 3 rows of connectors per web x 6 webs. Calculate connectors – total number of forms x 2 x 3 x 6.
4. Splice connectors – total forms x 18.
5. ARXX Edge tie anchors – 12 per corner.
6. Concrete volume – 8" volume x 1.75.

**15" Wide Wall**

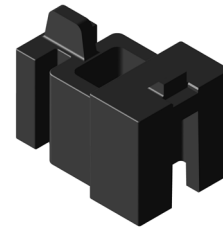
1. Estimate as an 10" wall to get the total number of standard, straight blocks and the concrete volume.
2. Requires one 10" and one 5" connector for the 15" wide wall, plus one splice connector.
3. Requires 3 rows of connectors per web x 6 webs. Calculate connectors – total number of forms x 2 x 3 x 6.
4. Splice connectors – total forms x 18.
5. ARXX Edge tie anchors – 12 per corner.
6. Concrete volume – 10" volume x 1.5.

**16" Wide Wall**

1. Estimate as a 10" wall to get the total number of standard, straight blocks and the concrete volume.
2. Requires one 10" and one 6" connectors for the 16" wide wall, plus one splice connector.
3. Requires 3 rows of connectors per web x six webs. Calculate connectors – total number of forms x 2 x 3 x 6.
4. Splice connectors – total forms x 18.
5. ARXX Edge tie anchors – 12 per corner.
6. Concrete volume – 10" volume x 1.6.



ARXX Edge splice connectors are required to extend the wall thickness, typically 18 per form.



At all corners, the ARXX Edge tie anchor is required to provide anchorage for zip ties to the corner panels. Typically, add 12 per corner.

Connectors			
	0	Show	4" Connectors
	0	Show	5" Connectors
	4758	Show	6" Connectors
	0	Show	8" Connectors
	0	Show	10" Connectors
	430	Show	Splice Connectors (1 inch)
	200	Show	Tie Anchors
	0	Show	Brickledge Rails
	16		pcs 90° Panel Connector
	0		pcs 45° Panel Connector

On a typical worksheet in the ARXX estimating program, there is a green input box to enter these manual quantity estimates for splice connectors and tie anchors. The estimated quantities for connectors can only be added into the estimating program on the order form.