

# Redefining Building.



## con·fi·dent

noun |'kän-fə-dənt|

What you feel when you work with the best ICFs in the industry:

- 1 High energy efficiency,
- 2 Providing big savings on heating and cooling costs,
- 3 A cost effective and faster build, and
- 4 The best support in the ICF industry.
- 5 **Redefining building.**

# ARXX™ ICF

Redefining building.

Product Catalogue: ARXX Edge

# ARXX<sup>™</sup> Edge | Product Catalogue

ARXX Edge Forms and Accessories

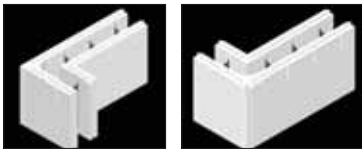
Note: all forms are identified by the nominal concrete core thickness.

|  | SKU        | EPS  | length | width | height | weight  | package |
|--|------------|------|--------|-------|--------|---------|---------|
| standard panel block (2 panels per form) | EB16-0-STD | 2 ½" | 48"    | 2 ½"  | 16"    | 5.8lbs. | 6       |



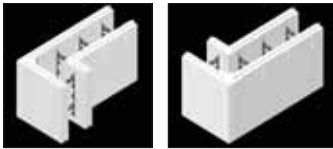
\*Note: requires two panels per form.

|                                    | SKU       | EPS  | length   | width | height | weight | package |
|------------------------------------|-----------|------|----------|-------|--------|--------|---------|
| 4" corner form (2 panels per form) | EB16-4-90 | 2 ½" | 16", 32" | 9"    | 16"    | 5 lbs. | 3L / 3R |



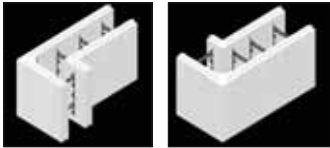
\*Note: connectors not included

|                                   | SKU       | EPS  | length   | width | height | weight   | package |
|-----------------------------------|-----------|------|----------|-------|--------|----------|---------|
| 6" 90° corner (2 panels per form) | EB16-6-90 | 2 ½" | 16", 32" | 11"   | 16"    | 4.9 lbs. | 3L / 3R |



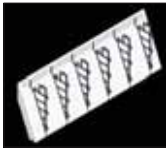
\*Note: connectors not included

|                                   | SKU       | EPS  | length   | width | height | weight   | package |
|-----------------------------------|-----------|------|----------|-------|--------|----------|---------|
| 8" 90° corner (2 panels per form) | EB16-8-90 | 2 ½" | 16", 32" | 13"   | 16"    | 4.8 lbs. | 3L / 3R |



\*Note: connectors not included

|                             | SKU        | EPS  | length | width | height | weight   | package |
|-----------------------------|------------|------|--------|-------|--------|----------|---------|
| brick ledge (per one panel) | EB16-0-EXT | 2 ½" | 48"    | N/A   | 16"    | 3.6 lbs. | 6       |



|                               | SKU             | EPS  | length | width | height | weight   | package |
|-------------------------------|-----------------|------|--------|-------|--------|----------|---------|
| taper top (2 panels per form) | EB16-0-TAPERTOP | 2 ½" | 48"    | 2 ½"  | 16"    | 5.8 lbs. | 6       |



**ARXX<sup>™</sup> ICF**  
Redefining building.

# ARXX™ Edge | Product Catalogue

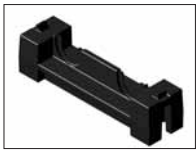
ARXX Edge Forms and Accessories

|               | SKU       | EPS  | length   | width | height | weight   | package |
|---------------|-----------|------|----------|-------|--------|----------|---------|
| 6" 45° corner | EB16-6-45 | 2 ½" | 16", 32" | 11"   | 16"    | 4.8 lbs. | 4       |



\*Note: connectors not included

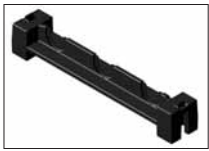
|              | SKU         | length | width | height | weight | package |
|--------------|-------------|--------|-------|--------|--------|---------|
| 4" connector | EB04-0-CONN | -      | -     | -      | -      | 1000    |



|              | SKU         | length | width | height | weight | package |
|--------------|-------------|--------|-------|--------|--------|---------|
| 5" connector | EB05-0-CONN | -      | -     | -      | -      | 1000    |



|              | SKU         | length | width | height | weight | package |
|--------------|-------------|--------|-------|--------|--------|---------|
| 6" connector | EB06-0-CONN | -      | -     | -      | -      | 500     |



|              | SKU         | length | width | height | weight | package |
|--------------|-------------|--------|-------|--------|--------|---------|
| 8" connector | EB08-0-CONN | -      | -     | -      | -      | 500     |



|               | SKU         | length | width | height | weight | package |
|---------------|-------------|--------|-------|--------|--------|---------|
| 10" connector | EB10-0-CONN | -      | -     | -      | -      | 500     |

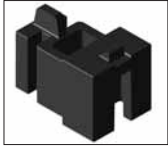


**ARXX™ ICF**  
Redefining building.

# ARXX™ Edge | Product Catalogue

ARXX Edge Forms and Accessories

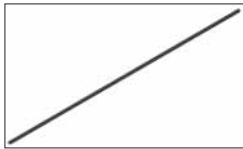
|               | SKU           | length | width | height | weight | package |
|---------------|---------------|--------|-------|--------|--------|---------|
| tie connector | EB0T-0-ANCHOR | -      | -     | -      | -      | 500     |



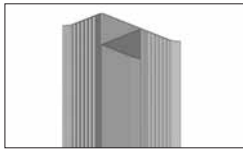
|                  | SKU         | length | width | height | weight | package |
|------------------|-------------|--------|-------|--------|--------|---------|
| splice connector | EB0S-0-CONN | -      | -     | -      | -      | 1000    |



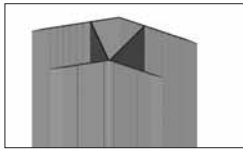
|                  | SKU         | length | width | height | weight | package |
|------------------|-------------|--------|-------|--------|--------|---------|
| brick ledge rail | EB0B-0-RAIL | 48"    | -     | -      | -      | 50      |



|                     | SKU          | length | width | height | weight | package |
|---------------------|--------------|--------|-------|--------|--------|---------|
| 90° panel connector | EB16-90-CONN | 47"    | 5.25" | 2.85"  | 2.45   | 8       |



|                     | SKU          | length | width | height | weight | package |
|---------------------|--------------|--------|-------|--------|--------|---------|
| 45° panel connector | EB16-45-CONN | 47"    | 5.25" | 3.5"   | 2.95   | 8       |



|  | Product Description  | SKU   | Block Dimensions         |                    |                |           | Surface         |               | Concrete Volume |              | Pack Quantity | Full Pack Dimensions |           |           |                 |    |
|--|--|---|--------------------------|--------------------|----------------|-----------|-----------------|---------------|-----------------|--------------|---------------|----------------------|-----------|-----------|-----------------|----|
|  |  |   | Total Block W<br>Inch    | L<br>Inch          | Foam W<br>Inch | H<br>Inch | Weight<br>(lbs) | Area<br>Sq Ft | Cubic Yards     | Cubic Meters |               | L<br>Inch            | W<br>Inch | H<br>Inch | Weight<br>(lbs) |    |
|  |  |   |                          |                    |                |           |                 |               |                 |              |               |                      |           |           |                 |    |
| 4"   | ARXX – EDGE Straight Panel Block - 4" connector            | EB16-0-STD / EB04-0-CONN                              | 9                        | 48                 | 2 ½            | 16        | 6               | 5.333         | 0.066           | 0.050        | 6             | 33                   | 17        | 48        | 35              |    |
|  | ARXX – EDGE 4" 90° Corner                                  | EB16-4-90   | 9                        | 32 x 16            | 2 ½            | 16        | 5               | 5.333         | 0.053           | 0.040        | 6             | 32                   | 19        | 49        | 30              |    |
|  | ARXX – PRIME 4" Standard Form                              | BL04-2-STD  | 9                        | 48                 | 2 ½            | 16 ¾      | 6               | 5.583         | 0.069           | 0.053        | 15            | 45                   | 48        | 51        | 90              |    |
|  | ARXX – PRIME 4" 90° Corner                                 | BL04-2-90   | 9                        | 32 x 16            | 2 ½            | 16 ¾      | 5               | 5.583         | 0.057           | 0.043        | 4             | 25                   | 32        | 34        | 20              |    |
| 5"   | ARXX – EDGE Straight Panel Block - 5" connector            | EB16-0-STD / EB05-0-CONN                              | 10                       | 48                 | 2 ½            | 16        | 6               | 5.333         | 0.082           | 0.063        | 6             | 33                   | 17        | 48        | 36              |    |
|  | ARXX – EDGE Straight Panel Block - 6" connectors           | EB16-0-STD / EB06-0-CONN                              | 11                       | 48                 | 2 ½            | 16        | 6               | 5.333         | 0.099           | 0.076        | 6             | 33                   | 17        | 48        | 36              |    |
| 6"   | ARXX – EDGE 6" 90° Corner                                  | EB16-6-90   | 11                       | 32 x 16            | 2 ½            | 16        | 5               | 5.333         | 0.075           | 0.058        | 6             | 32                   | 19        | 49        | 30              |    |
|  | ARXX – PRIME 6" Standard Exposed and 1 Side Concealed      | BL06-E-STD / BL06-1-STD                               | 11 ½                     | 48                 | 2 ½            | 16 ¾      | 7               | 5.583         | 0.108           | 0.082        | 12            | 46 ½                 | 48 ½      | 51        | 84              |    |
|  | ARXX – PRIME 6" - 90° Corner Exposed and 2 Sides Concealed | BL06-E-90 / BL06-2-90                                 | 11 ½                     | 32 x 16            | 2 ½            | 16 ¾      | 5               | 5.583         | 0.082           | 0.064        | 4             | 27 ½                 | 32        | 34        | 20              |    |
|  | ARXX – PRIME 6" - 12" High Standard                        | BL06-1-STD12  | 11 ½                     | 48                 | 2 ½            | 12        | 6               | 4.000         | 0.080           | 0.061        | 16            | 48                   | 48        | 48        | 96              |    |
|  | ARXX – PRIME 6" - 12" High Corner                          | BL06-1-9012   | 11 ½                     | 32 x 16            | 2 ½            | 12        | 5               | 4.000         | 0.060           | 0.046        | 4             | 32                   | 28        | 24        | 20              |    |
|  | ARXX – STEEL 6" Straight Waffle Grid                       | PS-3600   | 9 ¼                      | 48                 | 1 ½            | 16        | 9               | 5.333         | 0.074           | 0.057        | 12            | 47                   | 37        | 49        | 108             |    |
|  | ARXX – STEEL 6" 90° Corner Waffle Grid                     | PS-3690   | 9 ¼                      | 39 x 15            | 1 ½            | 16        | 6               | 5.030         | 0.060           | 0.046        | 12            | 36                   | 40 ¼      | 49        | 72              |    |
|  | ARXX – STEEL 6" 45° Corner Waffle Grid                     | PS-3645   | 9 ¼                      | 7 <sup>15/16</sup> | 1 ½            | 16        | 2               | 1.760         | 0.018           | 0.014        | 27            | 39 ½                 | 39 ½      | 49        | 54              |    |
|  | ARXX – STEEL 6" Straight Flat Wall                         | PS-4600-24  | 11                       | 48                 | 2 ½            | 24        | 10              | 8.000         | 0.148           | 0.113        | 8             | 49                   | 44        | 49        | 80              |    |
|  | ARXX – STEEL 6" 90° Corner Flat Wall                       | PS-4690-24  | 11                       | 39 x 15            | 2 ½            | 24        | 12              | 9.000         | 0.125           | 0.095        | 8             | 39 ½                 | 53        | 49        | 96              |    |
|  | ARXX – STEEL 6" 45° Corner Flat Wall                       | PS-4645-24  | 11                       | 9                  | 2 ½            | 24        | 3               | 3.000         | 0.041           | 0.031        | 18            | 46                   | 46        | 49        | 48              |    |
|  | 8"   | ARXX – EDGE Straight Panel Block - 8" connector       | EB16-0-STD / EB08-0-CONN | 13                 | 48             | 2 ½       | 16              | 6             | 5.333           | 0.130        | 0.099         | 6                    | 33        | 17        | 48              | 36 |
|  |  | ARXX – EDGE 8" 90° Corner                             | EB16-8-90                | 13                 | 32 x 16        | 2 ½       | 16              | 5             | 5.333           | 0.095        | 0.073         | 6                    | 32        | 19        | 49              | 30 |
|  |  | ARXX – PRIME 8" Standard Exposed and 1 Side Concealed | BL08-E-STD / BL08-1-STD  | 12 ½               | 48             | 2 ½       | 16 ¾            | 7             | 5.583           | 0.136        | 0.104         | 12                   | 51        | 48 ½      | 51              | 84 |
| ARXX – PRIME 8" - 90° Corner Exposed and 2 Sides Concealed |  | BL08-E-90 / BL08-2-90                                 | 12 ½                     | 32 x 16            | 2 ½            | 16 ¾      | 5               | 5.583         | 0.100           | 0.077        | 4             | 29                   | 32        | 34        | 20              |    |
| ARXX – PRIME 8" - 12" High Standard                        |  | BL08-1-STD12  | 12 ½                     | 48                 | 2 ½            | 12        | 6               | 4.000         | 0.098           | 0.075        | 16            | 48                   | 51        | 48        | 96              |    |
| ARXX – PRIME 8" - 12" High Corner                          |  | BL08-1-9012   | 12 ½                     | 32 x 16            | 2 ½            | 12        | 5               | 4.000         | 0.072           | 0.055        | 4             | 32                   | 29        | 24        | 20              |    |
| ARXX – STEEL 8" Straight Waffle Grid                       |  | PS-3800   | 11                       | 48                 | 1 ½            | 16        | 9               | 5.330         | 0.100           | 0.077        | 12            | 49                   | 44        | 49        | 108             |    |
| ARXX – STEEL 8" 90° Corner Waffle Grid                     |  | PS-3890   | 11                       | 35 ½ x 11 ½        | 1 ½            | 16        | 6               | 5.220         | 0.080           | 0.061        | 12            | 36                   | 46        | 49        | 72              |    |
| ARXX – STEEL 8" 45° Corner Waffle Grid                     |  | PS-3845   | 11                       | 8 <sup>9/16</sup>  | 1 ½            | 16        | 2               | 1.903         | 0.025           | 0.019        | 27            | 41 ½                 | 41 ½      | 49        | 54              |    |
| ARXX – STEEL 8" Flat Wall                                  |  | PS-4800-24  | 13                       | 48                 | 2 ½            | 24        | 12              | 8.000         | 0.197           | 0.151        | 6             | 49                   | 39        | 49        | 90              |    |
| ARXX – STEEL 8" 90° Corner Flat Wall                       |  | PS-4890-24  | 13                       | 41 x 17            | 2 ½            | 24        | 14              | 9.660         | 0.175           | 0.133        | 8             | 42                   | 61 ½      | 49        | 112             |    |
| ARXX – STEEL 8" 45° Corner Flat Wall                       |  | PS-4845-24  | 13                       | 10                 | 2 ½            | 24        | 4               | 3.330         | 0.060           | 0.046        | 18            | 48                   | 48        | 49        | 72              |    |
| 10"  |  | ARXX – EDGE Straight Panel Block - 10" connector      | EB16-0-STD / EB10-0-CONN | 15                 | 48             | 2 ½       | 16              | 6             | 5.333           | 0.160        | 0.121         | 6                    | 33        | 17        | 48              | 36 |
|  |  | ARXX – PRIME 10" Standard Form                        | BL10-1-STD               | 15                 | 48             | 2 ½       | 16 ¾            | 7             | 5.583           | 0.170        | 0.130         | 9                    | 48        | 47        | 51              | 63 |
|  | ARXX – PRIME 10" 90° Corner                                | BL10-1-90   | 15                       | 27 ½ x 19 ½        | 2 ½            | 16 ¾      | 7               | 5.460         | 0.114           | 0.087        | 4             | 32                   | 32        | 34        | 28              |    |
| 12"  | ARXX – EDGE Straight Panel Block - 2 x 6" connectors       | EB16-0-STD / EB06-0-CONN                              | 17                       | 48                 | 2 ½            | 16        | 6               | 5.533         | 0.198           | 0.151        | 6             | 33                   | 17        | 48        | 36              |    |