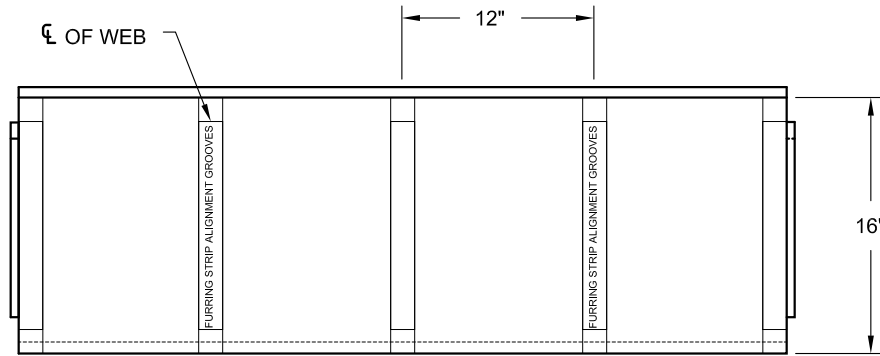
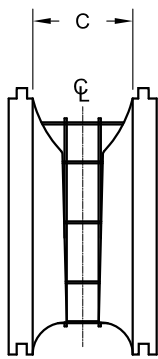


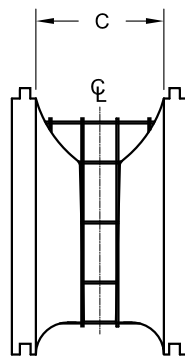
PLAN VIEW



SIDE ELEVATION BOTH SIDES



6" WEB



8" WEB

Form Type	Dimensions				Web Spacing	Wall Area/form (sf)	Concrete Volume/form (cu yd)
	A	B	C	D			
6"	9-1/4"	5-1/2"	6-1/4"	2"	12"	5.33	0.0740
8"	11"	8"	9"	2"			0.1000

B - VERTICAL CONCRETE CORE
C - HORIZONTAL CONCRETE CORE

NOTES:

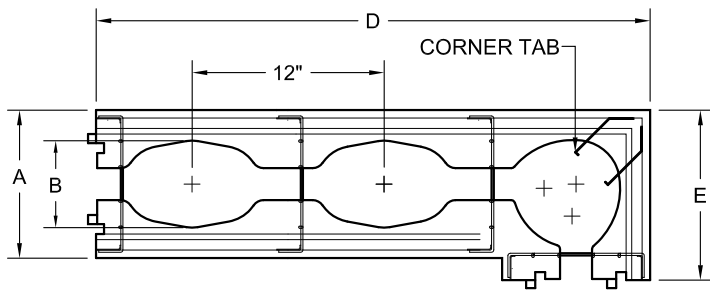
1. INSTALLATION TO BE COMPLETED IN ACCORDANCE WITH MANUFACTURER'S SPECIFICATIONS.
2. DO NOT SCALE DRAWINGS.
3. IT IS THE RESPONSIBILITY OF THE DESIGNER TO PROVIDE THE INFORMATION REQUIRED TO SUIT LOCAL BUILDING CODES AND REGULATIONS.

ARXX™ Steel Waffle Grid

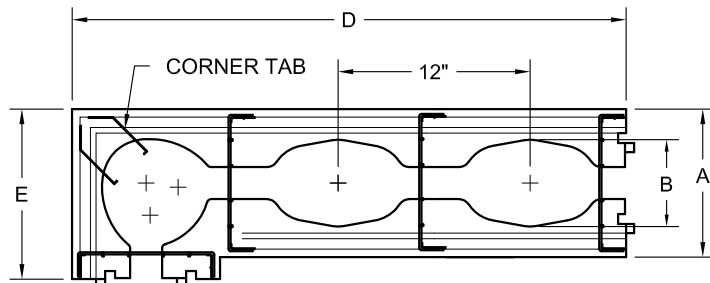
ARXX CORPORATION
800 DIVISION STREET
COBOURG, ONTARIO K9A 5V2
P: 800.293.3210
F: 905.373.8301

ARXX Steel Waffle Grid Standard Forms

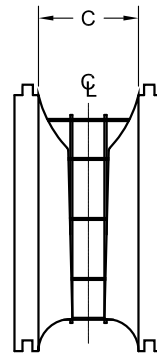
Revision No.:	Dwg. No.	W11-001
Revision Date		
Drawn By:	Date:	Scale:
LMB	2010-04-01	NTS



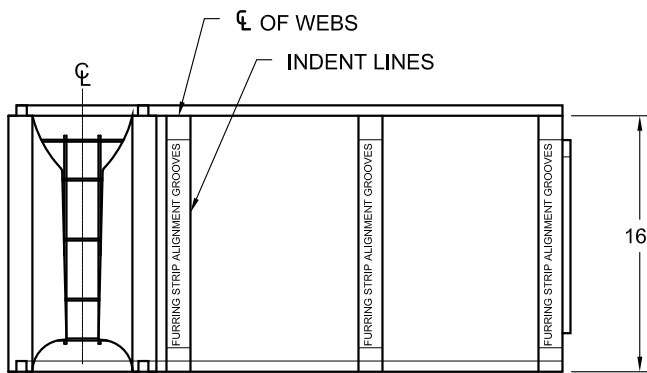
PLAN VIEW (RIGHT HAND)



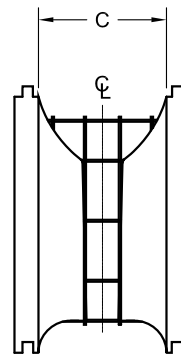
PLAN VIEW (LEFT HAND)



6" WEB



SIDE ELEVATION (LEFT HAND)



8" WEB

Form Type	Dimensions					Wall Area/form (sf)	Concrete Volume/form (cu yd)	Approx. Form Wt. (lbs)
	A	B	C	D	E			
6"	9-1/4"	5-1/2"	6-1/4"	34-5/8"	10-5/8"	5.03	0.0600	6
8"	11"	8"	9"	35-1/2"	11-1/2"	5.22	0.0800	

B - VERTICAL CONCRETE CORE
C - HORIZONTAL CONCRETE CORE

NOTES:

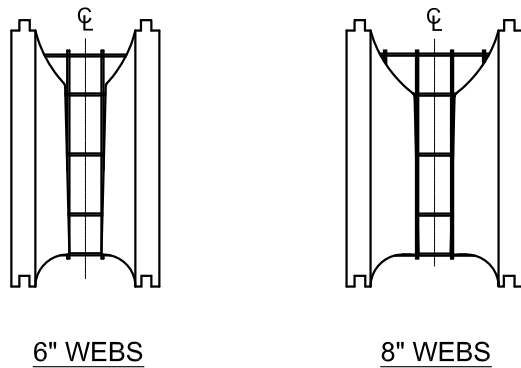
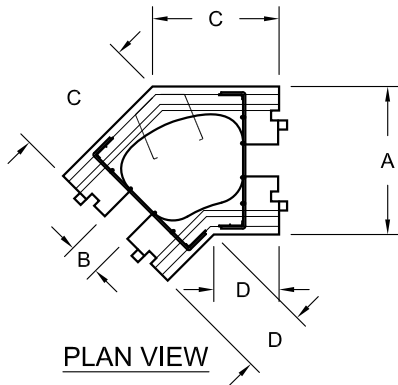
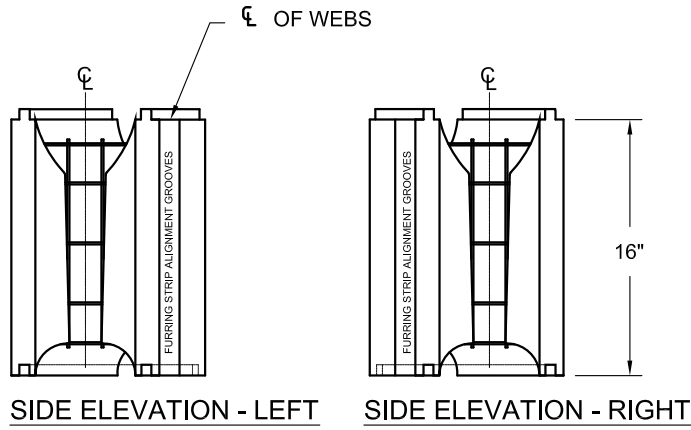
1. INSTALLATION TO BE COMPLETED IN ACCORDANCE WITH MANUFACTURER'S SPECIFICATIONS.
2. DO NOT SCALE DRAWINGS.
3. IT IS THE RESPONSIBILITY OF THE DESIGNER TO PROVIDE THE INFORMATION REQUIRED TO SUIT LOCAL BUILDING CODES AND REGULATIONS.

ARXX™ Steel Waffle Grid

ARXX CORPORATION
800 DIVISION STREET
COBOURG, ONTARIO K9A 5V2
P: 800.293.3210
F: 905.373.8301

**ARXX Steel Waffle Grid
90° Corner Forms**

Revision No.:	Dwg. No.	W11-002
Revision Date		
Drawn By:	Date:	Scale:
LMB	2010-07-30	NTS



Form Type	Dimensions				Wall Area/form (sf)	Concrete Volume/form (cu yd)
	A	B	C	D		
6"	9-1/4"	2"	7-15/16"	4-1/16"	1.76	0.0185
8"	11"	2"	8-9/16"	4"	1.90	0.0250

NOTES:

1. INSTALLATION TO BE COMPLETED IN ACCORDANCE WITH MANUFACTURER'S SPECIFICATIONS.
2. DO NOT SCALE DRAWINGS.
3. IT IS THE RESPONSIBILITY OF THE DESIGNER TO PROVIDE THE INFORMATION REQUIRED TO SUIT LOCAL BUILDING CODES AND REGULATIONS.

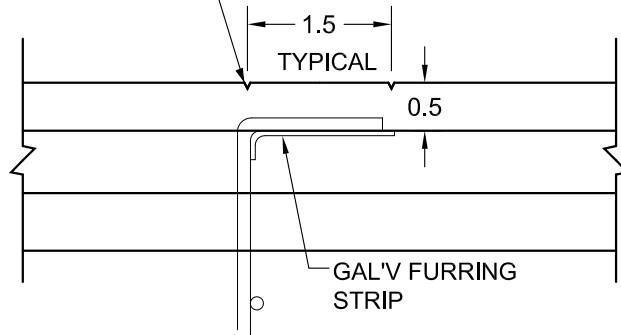
ARXX™ **Steel**
Waffle Grid

ARXX CORPORATION
800 DIVISION STREET
COBOURG, ONTARIO K9A 5V2
P: 800.293.3210
F: 905.373.8301

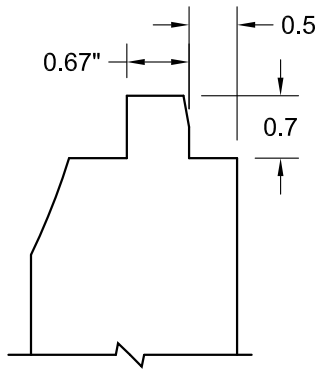
ARXX Steel Waffle Grid
45° Forms

Revision No.:	Dwg. No.	W11-003
Revision Date		
Drawn By:	Date:	Scale:
lmb	2010-04-01	NTS

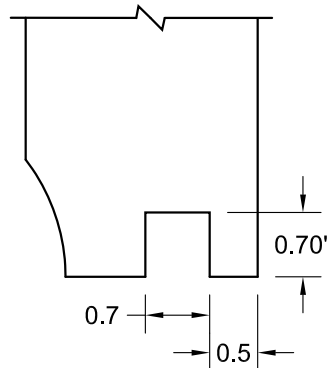
FURRING STRIP ALIGNMENT GROOVES
 DEFINE ALL FURRING STRIPS
 .062" DEEP x .062" WIDE



STEEL WEB PLAN DETAIL



TOP TONGUE DETAIL



BOTTOM GROOVE DETAIL

NOTES:

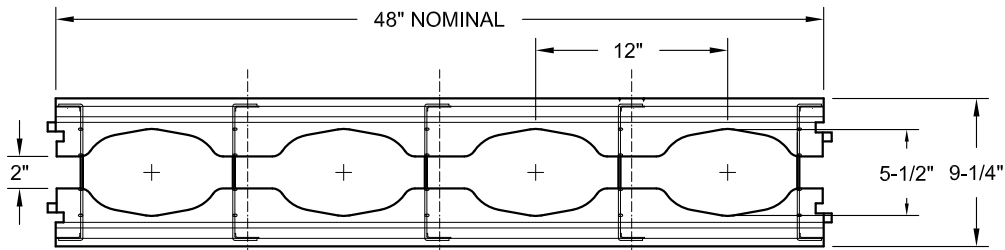
1. INSTALLATION TO BE COMPLETED IN ACCORDANCE WITH MANUFACTURER'S SPECIFICATIONS.
2. DO NOT SCALE DRAWINGS.
3. IT IS THE RESPONSIBILITY OF THE DESIGNER TO PROVIDE THE INFORMATION REQUIRED TO SUIT LOCAL BUILDING CODES AND REGULATIONS.

ARXX™ **Steel**
Waffle Grid

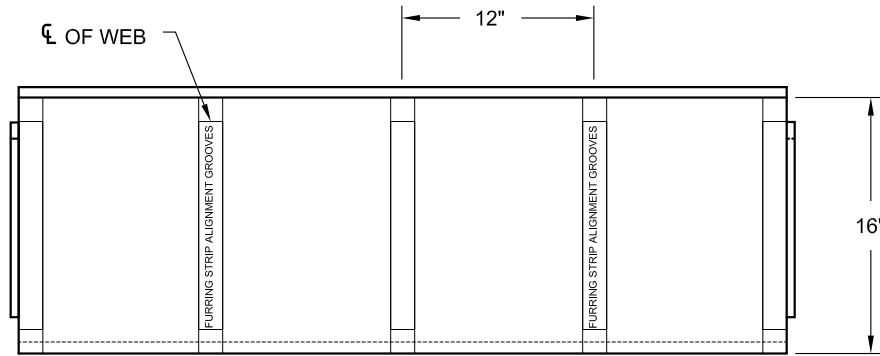
ARXX CORPORATION
 800 DIVISION STREET
 COBOURG, ONTARIO K9A 5V2
 P: 800.293.3210
 F: 905.373.8301

ARXX Steel Waffle Grid Form

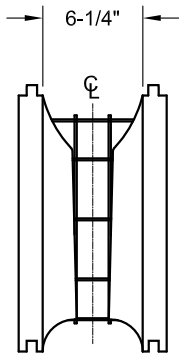
Revision No.:	Dwg. No.
Revision Date	W11-004
Drawn By:	Date:
TN	2010-06-28
	Scale:
	NTS



PLAN VIEW



SIDE ELEVATION BOTH SIDES



6" WEB

WEB SPACING: 12"

WALL AREA/FORM (SF): 5.33

CONCRETE VOLUME/FORM (CU YD): 0.0740

B - VERTICAL CONCRETE CORE
C - HORIZONTAL CONCRETE CORE

NOTES:

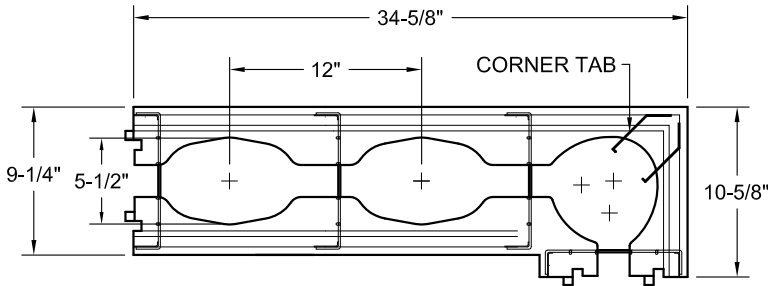
1. INSTALLATION TO BE COMPLETED IN ACCORDANCE WITH MANUFACTURER'S SPECIFICATIONS.
2. DO NOT SCALE DRAWINGS.
3. IT IS THE RESPONSIBILITY OF THE DESIGNER TO PROVIDE THE INFORMATION REQUIRED TO SUIT LOCAL BUILDING CODES AND REGULATIONS.

ARXX™ **Steel**
Waffle Grid

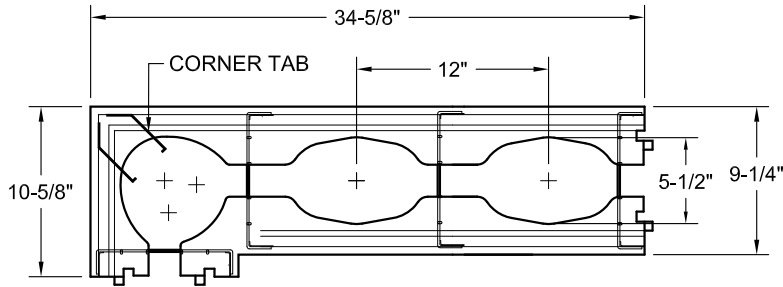
ARXX CORPORATION
800 DIVISION STREET
COBOURG, ONTARIO K9A 5V2
P: 800.293.3210
F: 905.373.8301

ARXX Steel Waffle Grid
6" Standard Form

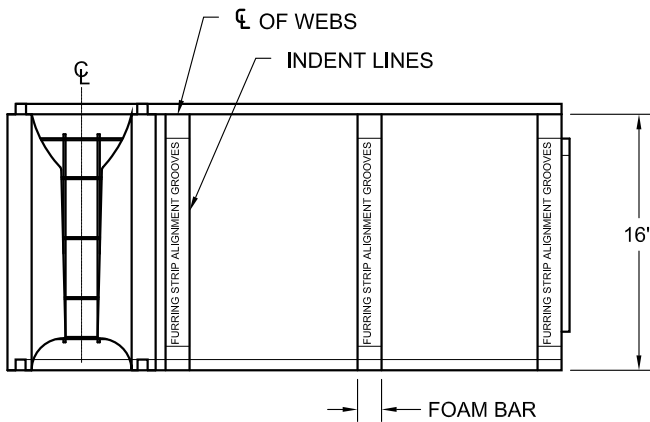
Revision No.:	Dwg. No.	6W11-010
Revision Date		
Drawn By:	Date:	Scale:
LMB	2010-04-01	NTS



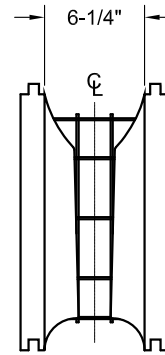
PLAN VIEW (RIGHT HAND)



PLAN VIEW (LEFT HAND)



SIDE ELEVATION (LEFT HAND)



6" WEB

WALL AREA/FORM (SF): 5.03
 CONCRETE VOLUME/FORM (CU YD): 0.0600
 APPROX. FORM WEIGHT (*LBS): 6

NOTES:

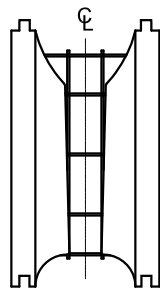
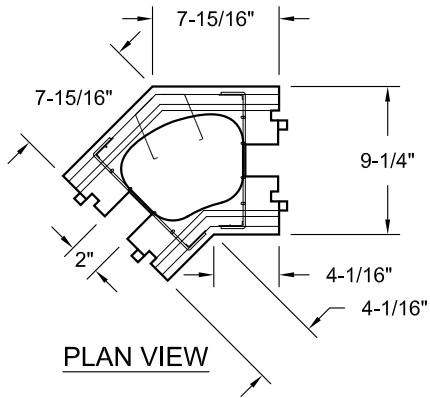
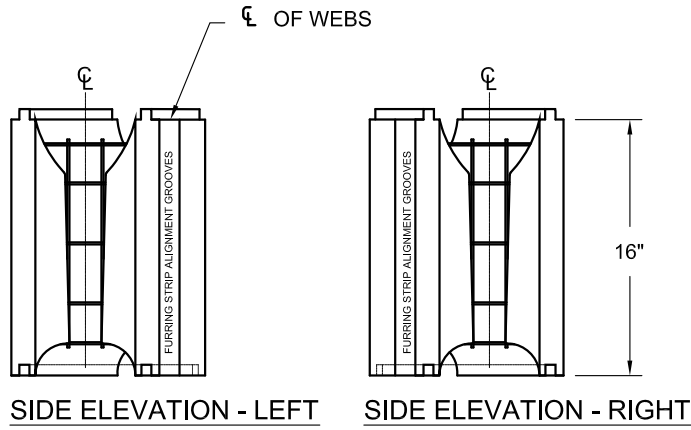
1. INSTALLATION TO BE COMPLETED IN ACCORDANCE WITH MANUFACTURER'S SPECIFICATIONS.
2. DO NOT SCALE DRAWINGS.
3. IT IS THE RESPONSIBILITY OF THE DESIGNER TO PROVIDE THE INFORMATION REQUIRED TO SUIT LOCAL BUILDING CODES AND REGULATIONS.

ARXX™ Steel Waffle Grid

ARXX CORPORATION
 800 DIVISION STREET
 COBOURG, ONTARIO K9A 5V2
 P: 800.293.3210
 F: 905.373.8301

ARXX Steel Waffle Grid
 6" 90° Corner Form

Revision No.:	Dwg. No.	6W11-011
Revision Date		
Drawn By:	Date:	Scale:
LMB	2010-07-30	NTS



6" WEBS

WALL AREA/FORM (SF): 1.76

CONCRETE VOLUME/FORM (CU YD): 0.0185

NOTES:

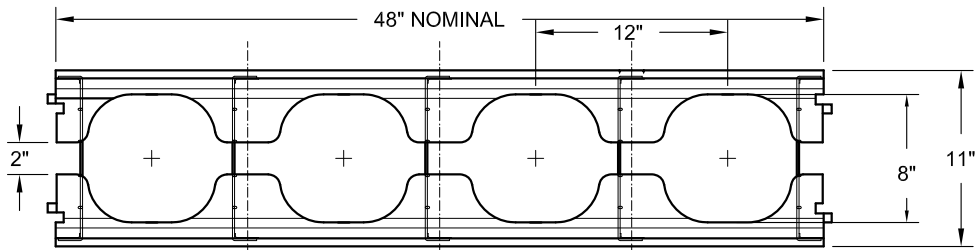
1. INSTALLATION TO BE COMPLETED IN ACCORDANCE WITH MANUFACTURER'S SPECIFICATIONS.
2. DO NOT SCALE DRAWINGS.
3. IT IS THE RESPONSIBILITY OF THE DESIGNER TO PROVIDE THE INFORMATION REQUIRED TO SUIT LOCAL BUILDING CODES AND REGULATIONS.

ARXX™ Steel
Waffle Grid

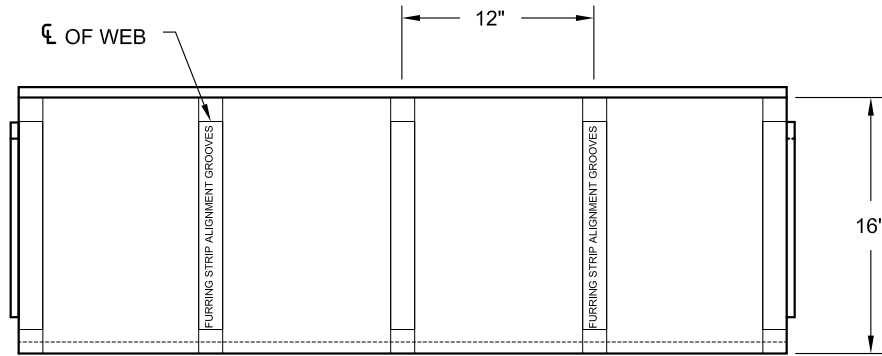
ARXX CORPORATION
800 DIVISION STREET
COBOURG, ONTARIO K9A 5V2
P: 800.293.3210
F: 905.373.8301

ARXX Steel Waffle Grid
6" 45° Form

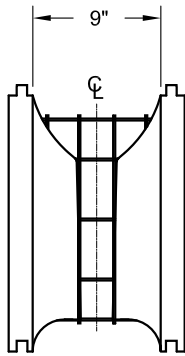
Revision No.:	Dwg. No.	6W11-012
Revision Date		
Drawn By:	Date:	Scale:
LMB	2010-04-01	NTS



PLAN VIEW



SIDE ELEVATION BOTH SIDES



8" WEB

WEB SPACING: 12"
WALL AREA/FORM (SF): 5.33
CONCRETE VOLUME/FORM (CU YD): 0.1000

B - VERTICAL CONCRETE CORE
 C - HORIZONTAL CONCRETE CORE

NOTES:

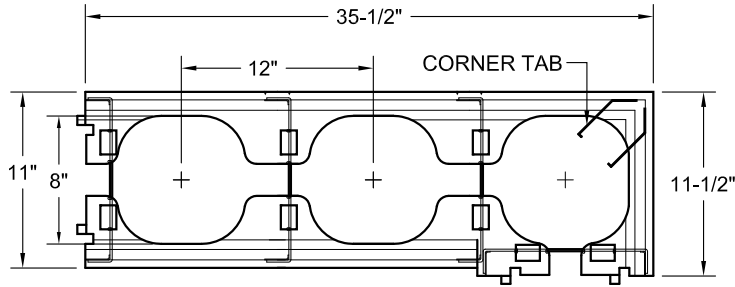
1. INSTALLATION TO BE COMPLETED IN ACCORDANCE WITH MANUFACTURER'S SPECIFICATIONS.
2. DO NOT SCALE DRAWINGS.
3. IT IS THE RESPONSIBILITY OF THE DESIGNER TO PROVIDE THE INFORMATION REQUIRED TO SUIT LOCAL BUILDING CODES AND REGULATIONS.

ARXX™ Steel Waffle Grid

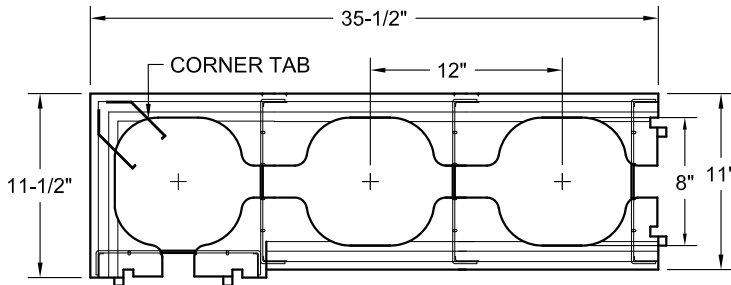
ARXX CORPORATION
 800 DIVISION STREET
 COBOURG, ONTARIO K9A 5V2
 P: 800.293.3210
 F: 905.373.8301

ARXX Steel Waffle Grid
8" Standard Form

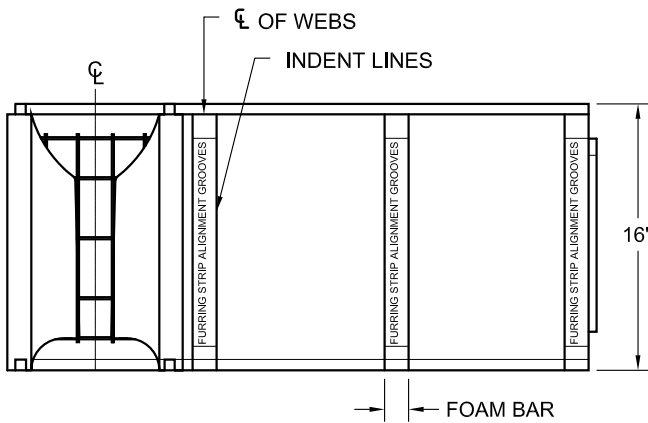
Revision No.:	Dwg. No.	8W11-013
Revision Date		
Drawn By:	Date:	Scale:
LMB	2010-04-01	NTS



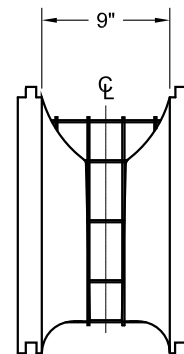
PLAN VIEW (RIGHT HAND)



PLAN VIEW (LEFT HAND)



SIDE ELEVATION (LEFT HAND)



8" WEB

WALL AREA/FORM (SF): 5.22
 CONCRETE VOLUME/FORM (CU YD): 0.0800
 APPROX. FORM WEIGHT (LBS): 6

NOTES:

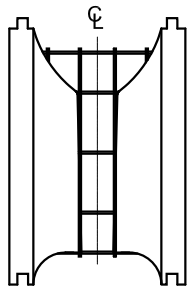
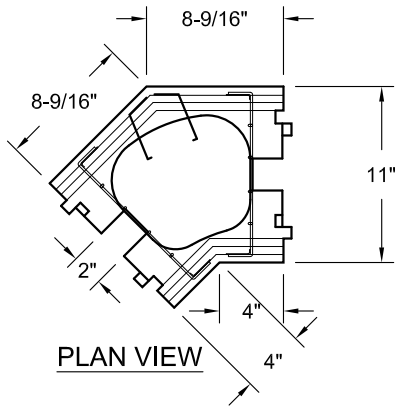
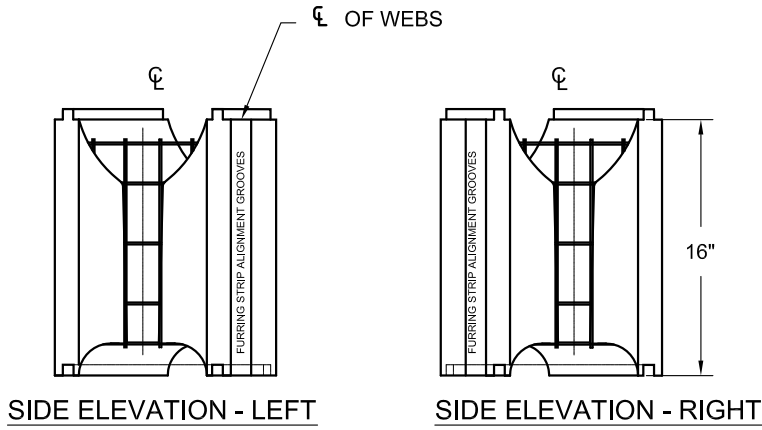
1. INSTALLATION TO BE COMPLETED IN ACCORDANCE WITH MANUFACTURER'S SPECIFICATIONS.
2. DO NOT SCALE DRAWINGS.
3. IT IS THE RESPONSIBILITY OF THE DESIGNER TO PROVIDE THE INFORMATION REQUIRED TO SUIT LOCAL BUILDING CODES AND REGULATIONS.

ARXX™ **Steel**
Waffle Grid

ARXX CORPORATION
 800 DIVISION STREET
 COBOURG, ONTARIO K9A 5V2
 P: 800.293.3210
 F: 905.373.8301

ARXX Steel Waffle Grid
8" 90° Corner Form

Revision No.:	Dwg. No.	8W11-014
Revision Date		
Drawn By:	Date:	Scale:
LMB	2010-07-30	NTS



8" WEBS

WALL AREA/FORM (SF): 1.90

CONCRETE VOLUME/FORM (CU YD): 0.0250

NOTES:

1. INSTALLATION TO BE COMPLETED IN ACCORDANCE WITH MANUFACTURER'S SPECIFICATIONS.
2. DO NOT SCALE DRAWINGS.
3. IT IS THE RESPONSIBILITY OF THE DESIGNER TO PROVIDE THE INFORMATION REQUIRED TO SUIT LOCAL BUILDING CODES AND REGULATIONS.

ARXX™ Steel
Waffle Grid

ARXX CORPORATION
800 DIVISION STREET
COBOURG, ONTARIO K9A 5V2
P: 800.293.3210
F: 905.373.8301

ARXX Steel Waffle Grid
8" 45° Form

Revision No.:	Dwg. No.	8W11-015
Revision Date		
Drawn By:	Date:	Scale:
LMB	2010-04-01	NTS